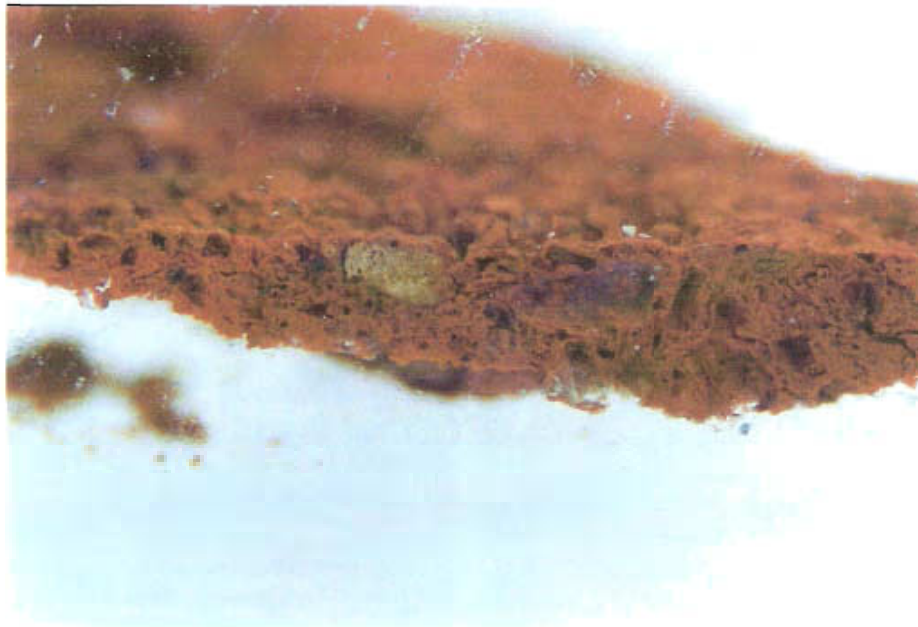


*UVA Pavilion I Exterior Brick Sample.*

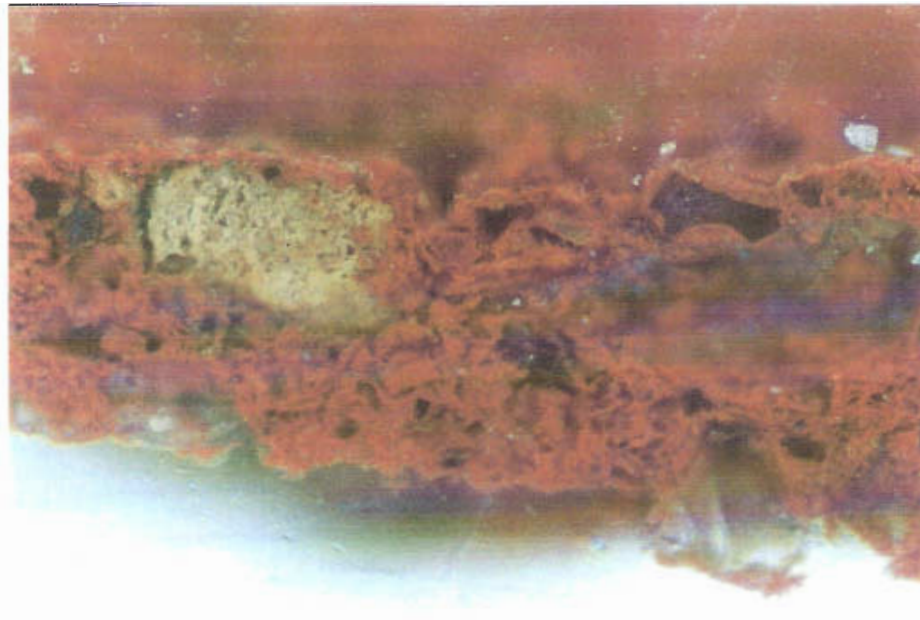
Sample I-1. Brick face, 45" south (left) of front door and 55" above paving. This sample was taken from an area of brick that is darker and glossier than most of the bricks on the facades of the other Pavilions. Mark R. Wenger felt it was possible this glossiness and darkening could be the result of oiling the brick at some point. It was not possible to determine anything substantive about the surfaces when they were examined on-site at 30X magnification. In cross-section there is no evidence of the thin deep red wash identified in samples VIII-1 and VIII-2 and there is no autofluorescent material in the brick substrate (thus it is dark in reflected ultraviolet light). However, there was a very strong reaction for the presence of oils with the fluorochrome Rhodamine B, a tag for oily materials. This reaction color is bright orange in reflected ultraviolet light and it appears in the interstices of the coarse brick as well as in pockets where oil could have been trapped in larger voids in the brick. This evidence does suggest that this particular area of brick was oiled, but it does not help to date the application of the oil, nor does it reveal the type of oil applied.

Sample I-1. Visible Light 50X



Sample I-1. Brick face, 45" south (left) of front door and 55" above paving.

Visible Light 125X



UV Light & RHOB 125X  
For the presence of oils

